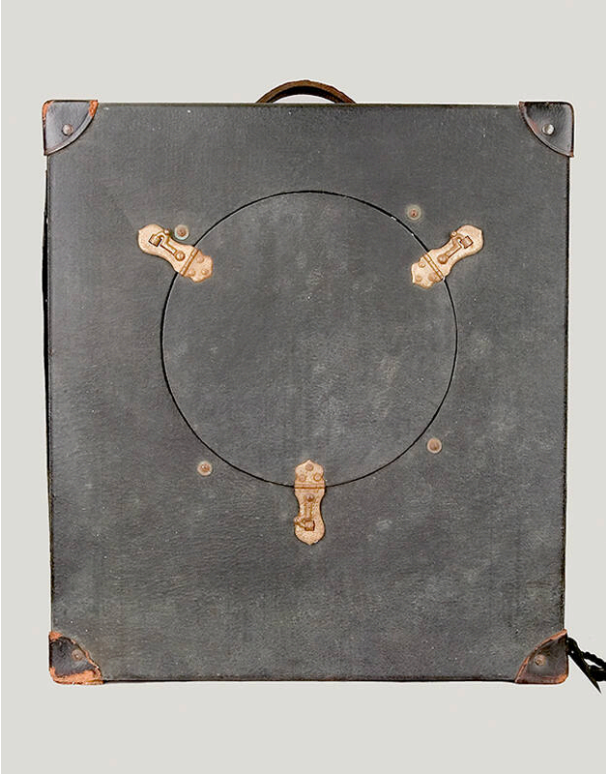


Basic Detail Report



Amplifier

Date

1934-1935 ca.

Primary Maker

Webster Electric Company

Description

Amplifier with four vacuum tubes, a nine-inch speaker, and contoured aluminum foot pedal to control volume. Sold with NMM 10811, Vivi-Tone electric guitar.

Dimensions

Case measurements: Depth: 251 mm; Width: 426 mm; Height: 474 mm.